

Texas Instruments

DESIGNER:
Brian Ashelin
(507) 536-2901

TITLE:

CC1110_AIC3104



ENGINEER:
Mike Burns
(507) 536-2902

PART NO.: CC1110_AIC3104

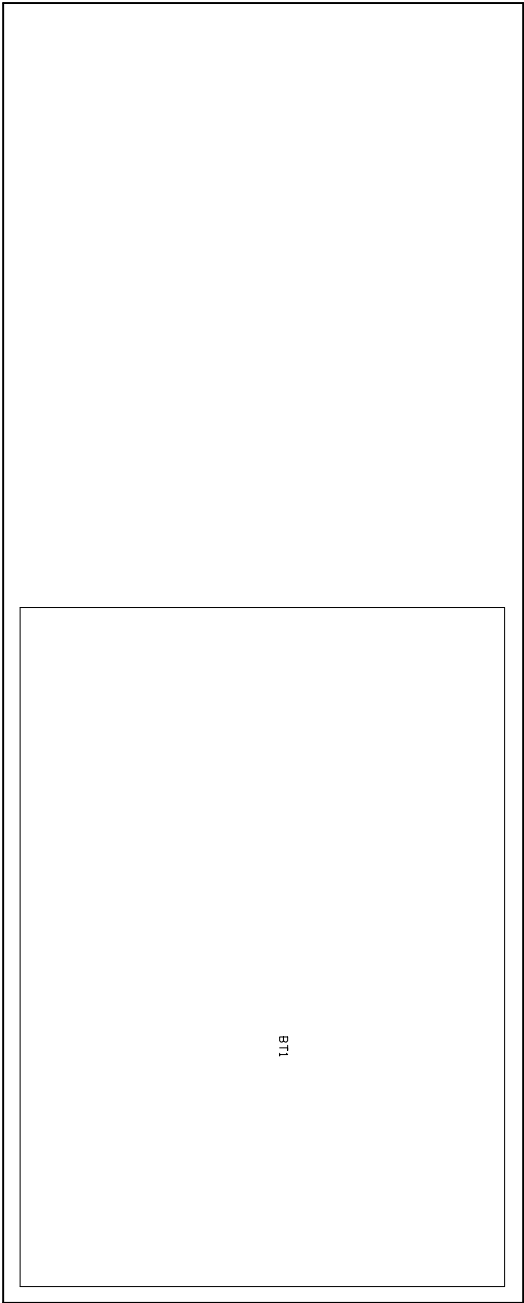
REV: B

DATE: 1-Jun-2011

FILE NAME: CC1110_AIC3104.PCB

LAYER: Mechanical1

GERBER:



Texas Instruments

DESIGNER:
Brian Ashelin
(507) 536-2901

TITLE:
CC1110_AIC3104



ENGINEER:
Mike Burns
(507) 536-2902

PART NO.: **CC1110_AIC3104**

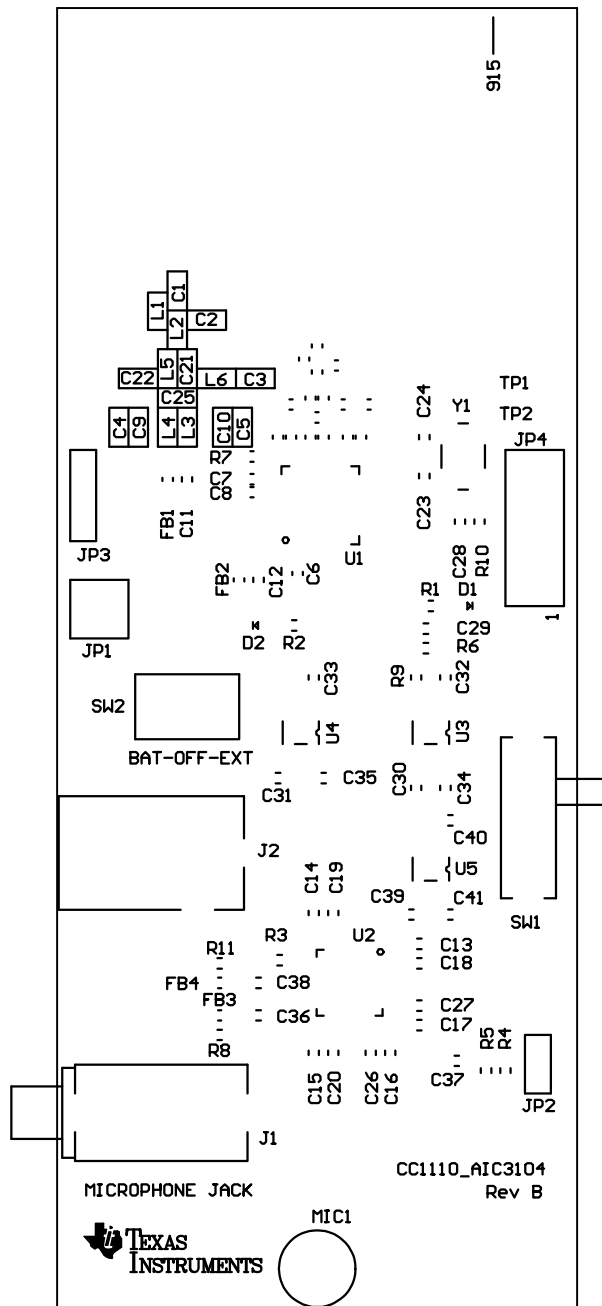
REV: **B**

DATE: **1-Jun-2011**

FILE NAME: **CC1110_AIC3104.PCB**

LAYER: **Mechanical5**

GERBER:



Texas Instruments

DESIGNER:
Brian Ashelin
(507) 536-2901

TITLE:

CC1110_AIC3104

TEXAS
INSTRUMENTS

ENGINEER:
Mike Burns
(507) 536-2902

PART NO.: CC1110_AIC3104

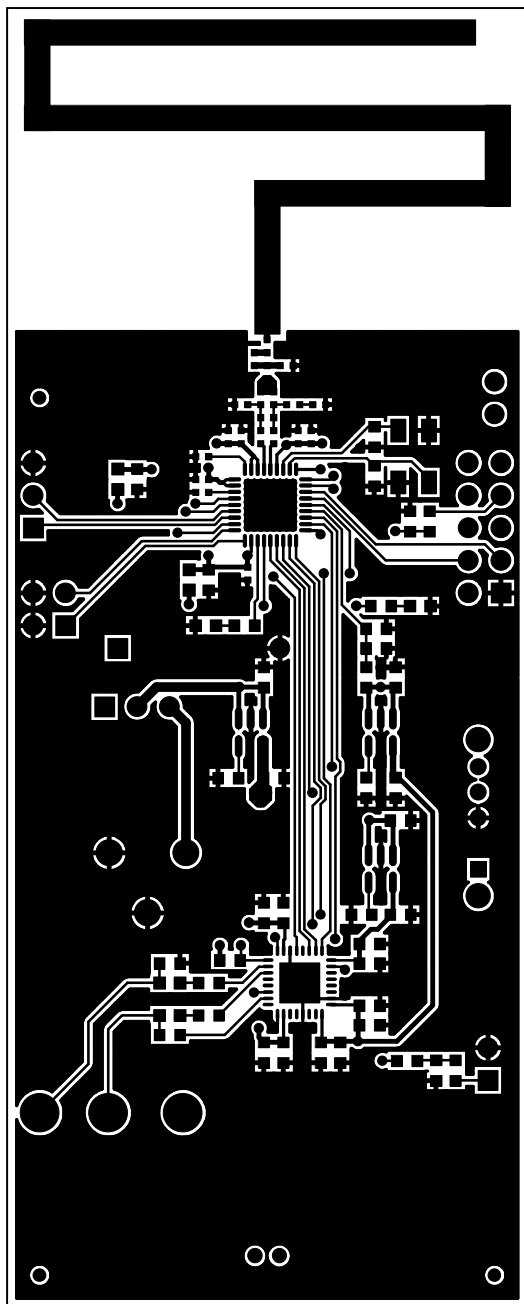
REV: B

DATE: 1-Jun-2011

FILE NAME: CC1110_AIC3104.PCB

LAYER: Top Overlay

GERBER: .GTO



Texas Instruments

DESIGNER:
Brian Ashelin
(507) 536-2901

TITLE:

CC1110_AIC3104



ENGINEER:
Mike Burns
(507) 536-2902

PART NO.: CC1110_AIC3104

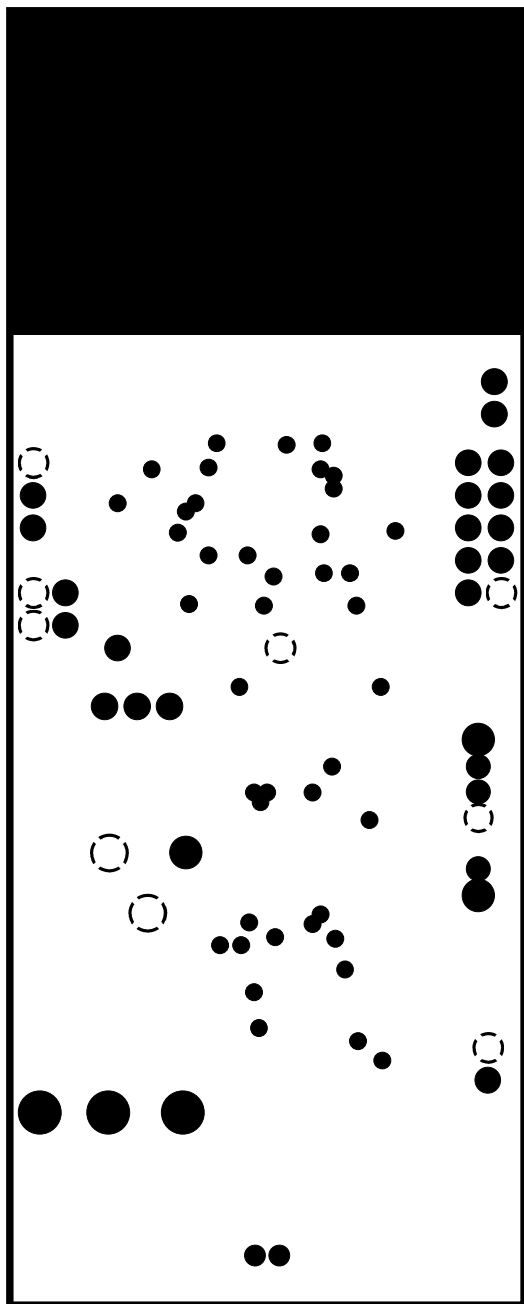
REV: B

DATE: 1-Jun-2011

FILE NAME: CC1110_AIC3104.PCB

LAYER: TopLayer

GERBER: .GTL



Texas Instruments

DESIGNER:
Brian Ashelin
(507) 536-2901

TITLE:

CC1110_AIC3104

 **TEXAS
INSTRUMENTS**

ENGINEER:
Mike Burns
(507) 536-2902

PART NO.: CC1110_AIC3104

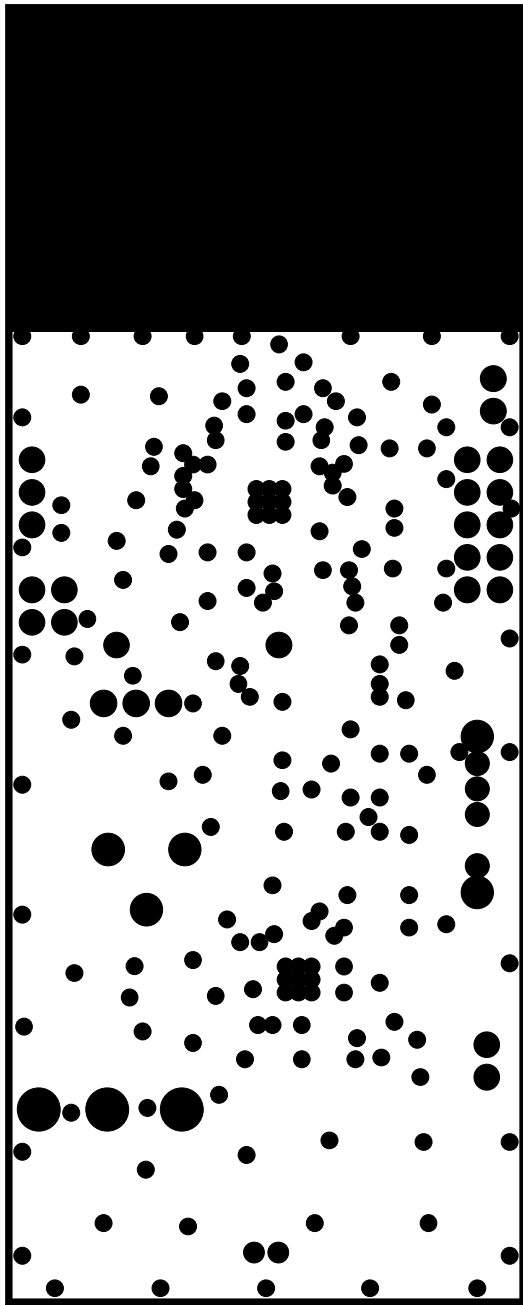
REV: B

DATE: 1-Jun-2011

FILE NAME: CC1110_AIC3104.PCB

LAYER: InternalPlane1

GERBER: .GP1



Texas Instruments

DESIGNER:
Brian Ashelin
(507) 536-2901

TITLE:

CC1110_AIC3104



ENGINEER:
Mike Burns
(507) 536-2902

PART NO.: CC1110_AIC3104

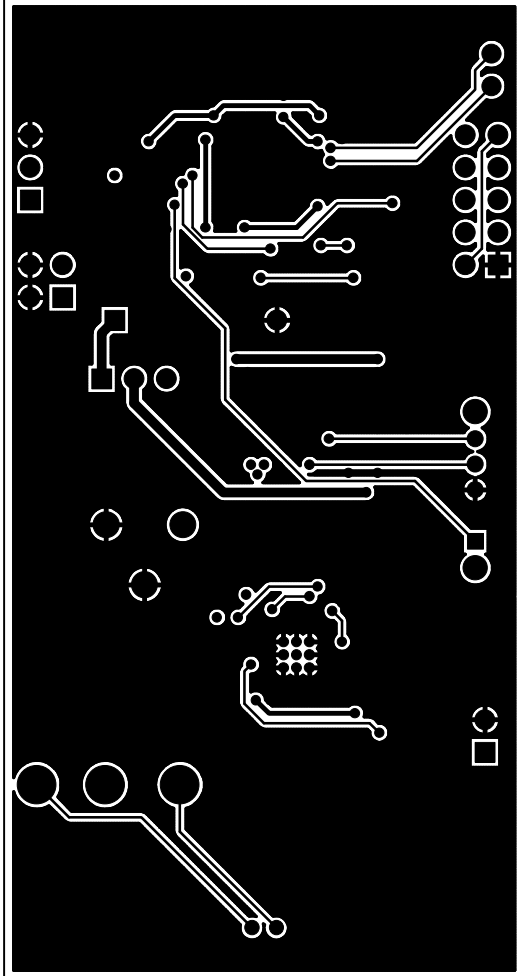
REV: B

DATE: 1-Jun-2011

FILE NAME: CC1110_AIC3104.PCB

LAYER: InternalPlane2

GERBER: .GP2



Texas Instruments

DESIGNER:
Brian Ashelin
(507) 536-2901

TITLE:

CC1110_AIC3104



ENGINEER:
Mike Burns
(507) 536-2902

PART NO.: CC1110_AIC3104

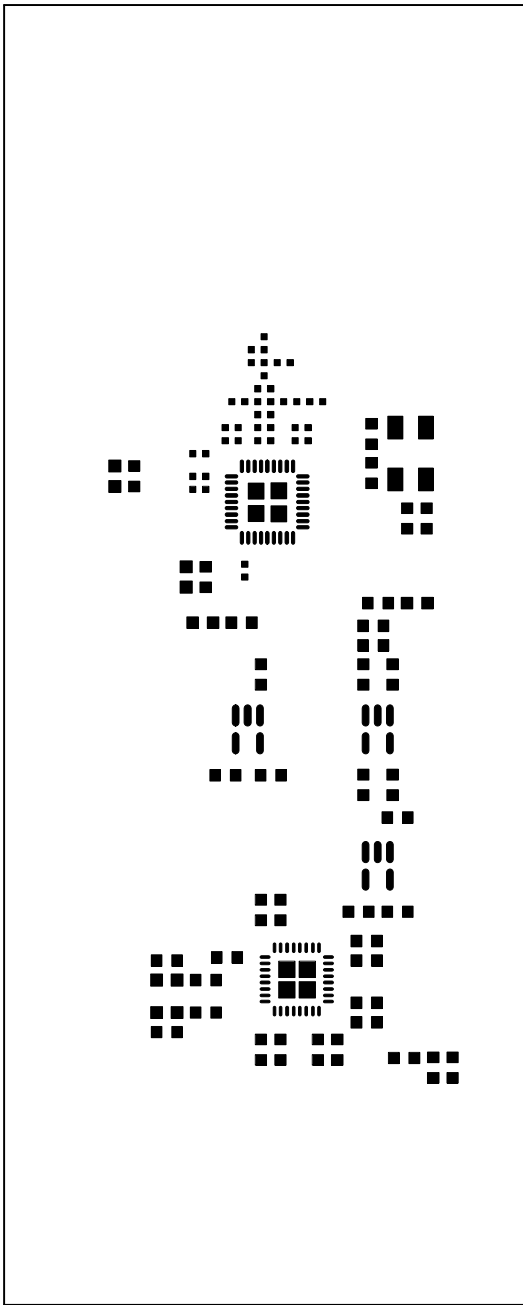
REV: B

DATE: 1-Jun-2011

FILE NAME: CC1110_AIC3104.PCB

LAYER: BottomLayer

GERBER: .GBL



Texas Instruments

DESIGNER:
Brian Ashelin
(507) 536-2901

TITLE:

CC1110_AIC3104



ENGINEER:
Mike Burns
(507) 536-2902

PART NO.: CC1110_AIC3104

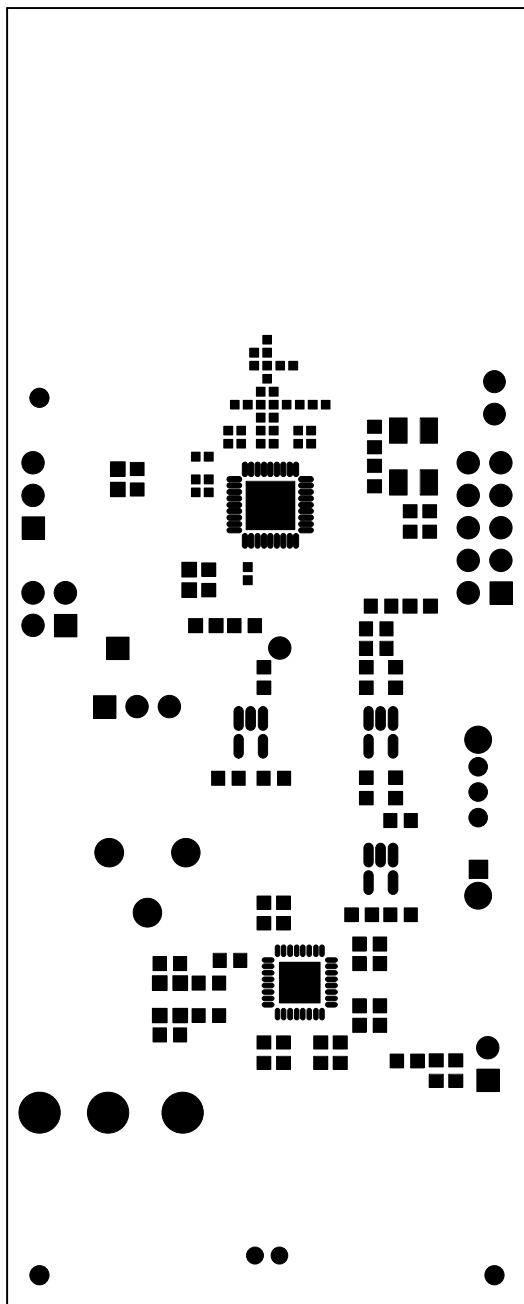
REV: B

DATE: 1-Jun-2011

FILE NAME: CC1110_AIC3104.PCB

LAYER: Top Paste

GERBER: .GTP



Texas Instruments

DESIGNER:
Brian Ashelin
(507) 536-2901

TITLE:

CC1110_AIC3104

 TEXAS
INSTRUMENTS

ENGINEER:
Mike Burns
(507) 536-2902

PART NO.: CC1110_AIC3104

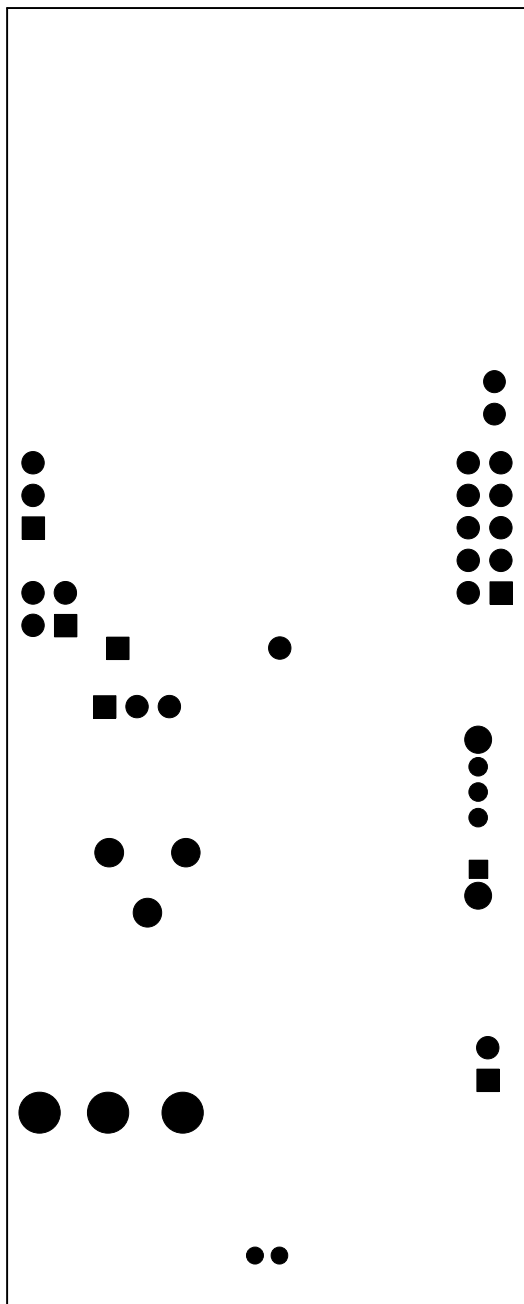
REV: B

DATE: 1-Jun-2011

FILE NAME: CC1110_AIC3104.PCB

LAYER: Top Solder Mask

GERBER: .GTS



Texas Instruments

DESIGNER:
Brian Ashelin
(507) 536-2901

TITLE:

CC1110_AIC3104

 **TEXAS
INSTRUMENTS**

ENGINEER:
Mike Burns
(507) 536-2902

PART NO.: CC1110_AIC3104

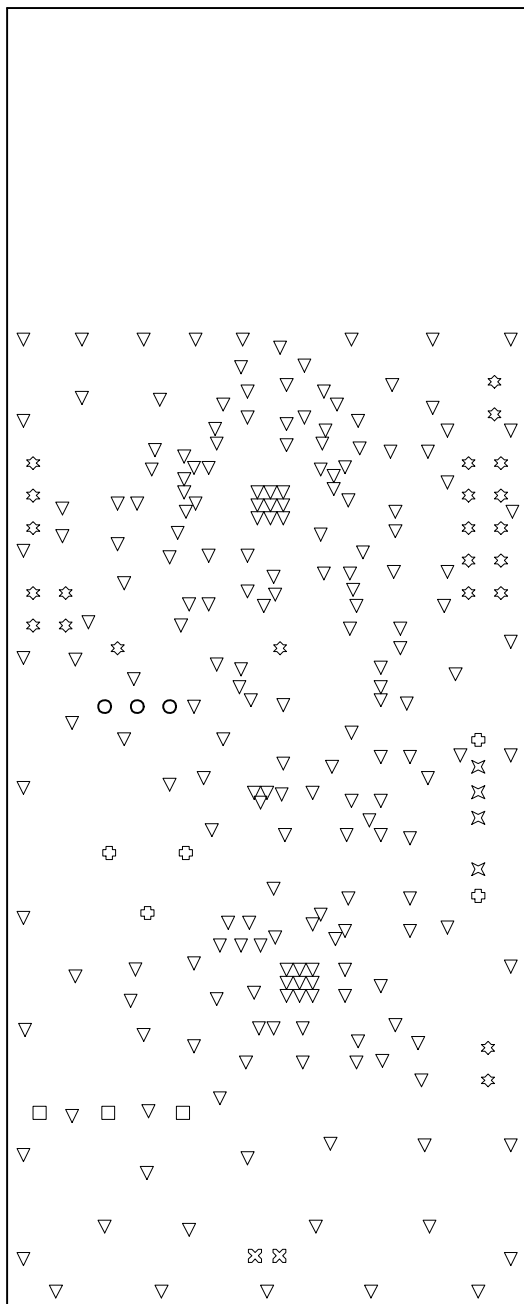
REV: B

DATE: 1-Jun-2011

FILE NAME: CC1110_AIC3104.PCB

LAYER: Bottom Solder Mask

GERBER: .GBS



▽	204	13.5mil	0.3429mm	PTH
⊗	2	25mil	0.635mm	PTH
⊗	4	35mil	0.889mm	PTH
⊗	23	40mil	1.016mm	PTH
○	3	43mil	1.0922mm	PTH
⊕	5	61mil	1.5494mm	PTH
□	3	93mil	2.3622mm	PTH
	244	Total		

Drill Drawing.

Texas Instruments

DESIGNER:
Brian Ashelin
(507) 536-2901

TITLE:

CC1110_AIC3104

 **TEXAS
INSTRUMENTS**

ENGINEER:
Mike Burns
(507) 536-2902

PART NO.: CC1110_AIC3104

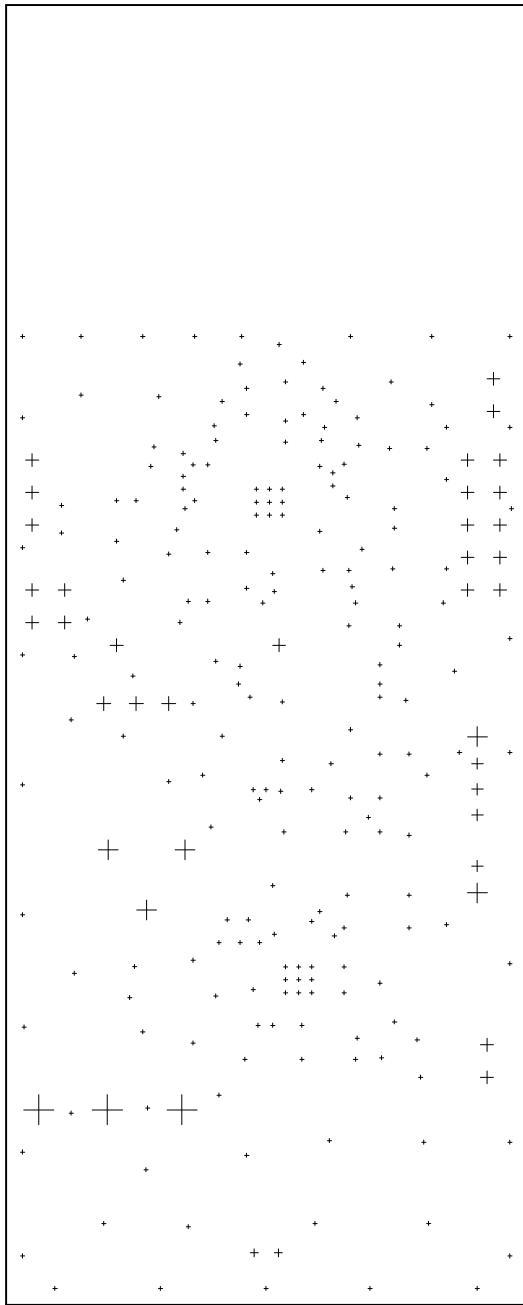
REV: B

DATE: 1-Jun-2011

FILE NAME: CC1110_AIC3104.PCB

LAYER: DrillDrawing

GERBER:



Texas Instruments

DESIGNER:
Brian Ashelin
(507) 536-2901

TITLE:

CC1110_AIC3104



ENGINEER:
Mike Burns
(507) 536-2902

PART NO.: CC1110_AIC3104

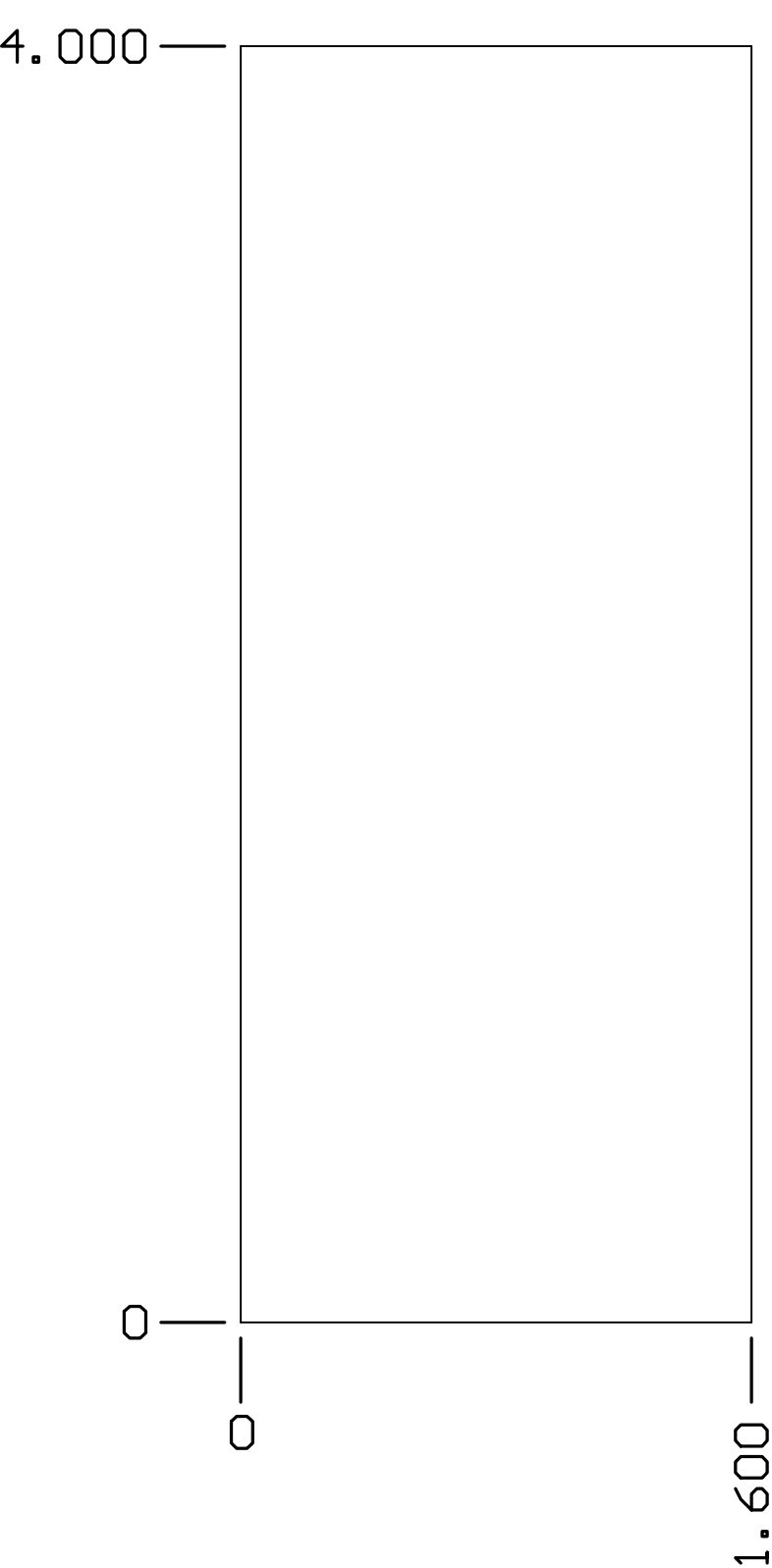
REV: B

DATE: 1-Jun-2011

FILE NAME: CC1110_AIC3104.PCB

LAYER: DrillGuide

GERBER:



Texas Instruments

DESIGNER:
Brian Ashelin
(507) 536-2901

TITLE:

CC1110_AIC3104



ENGINEER:
Mike Burns
(507) 536-2902

PART NO.: CC1110_AIC3104

REV: B

DATE: 1-Jun-2011

FILE NAME: CC1110_AIC3104.PCB

LAYER: Mechanical3

GERBER: